

Revit User Guide for

camira

24/7 Flax

Version 1.0 | Revit 2015
April 2019

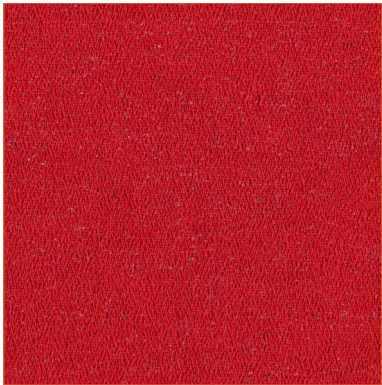
Created by



CamiraFabrics_TxtlRllCvrngs_24/7Flax

File Features

- Multiple Finishes (please see manufacture brochure)



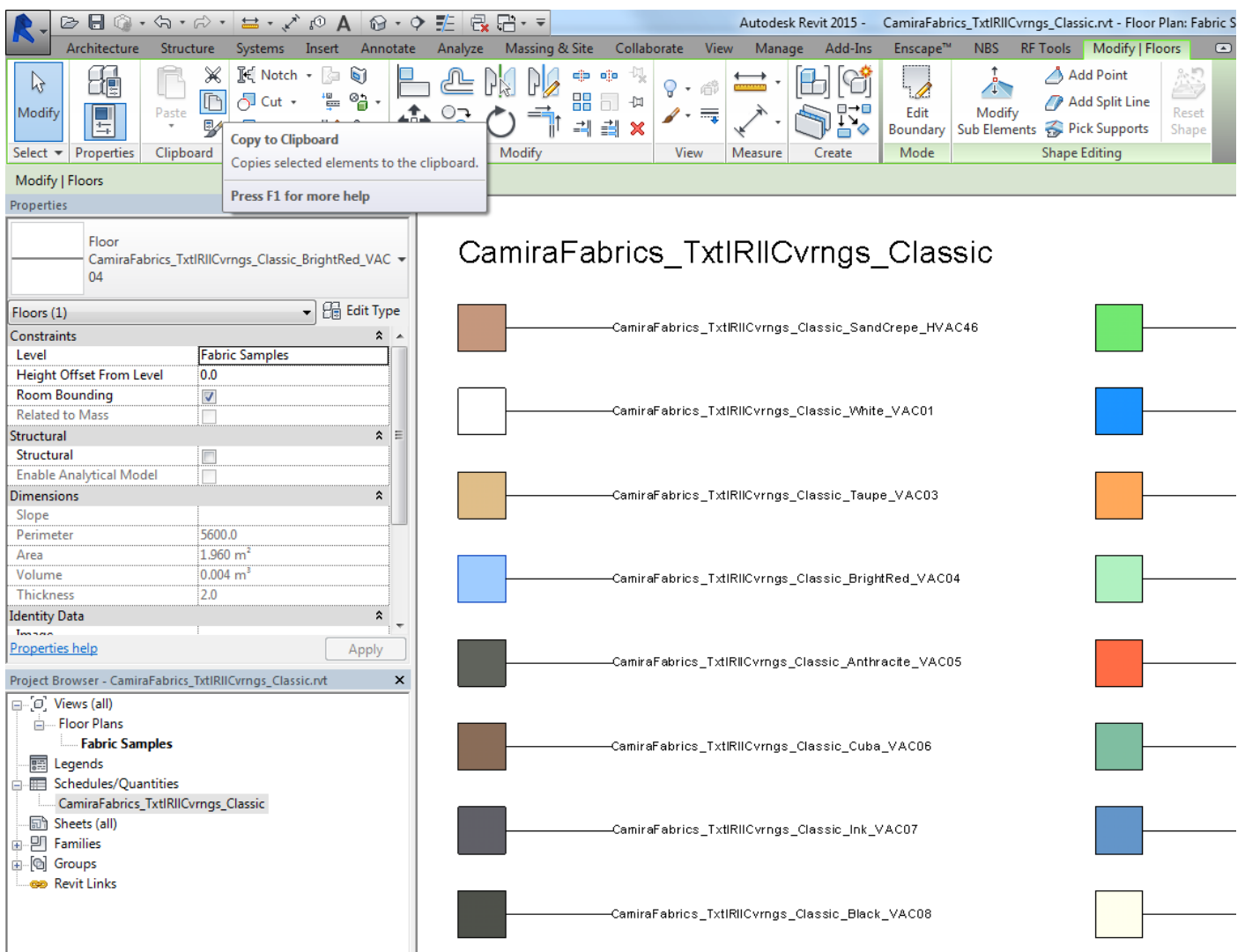
Predefined Types

Type Name	Type Name	Type Name
FYR02 Vernal	FYR12 Stint	
FYR03 Equinox	FYR15 Annual	
FYR04 Chronology	FYR16 Ancient	
FYR05 Olympiad	FYR17 Shift	
FYR06 Indiction	FYR18 Eternity	
FYR09 Zone	FYR19 Quarter	
FYR10 Future	FYR20 Linearity	
FYR11 Continuance	FYR21 While	

A simple guide to using your Revit Ready file.

1. LOAD IT

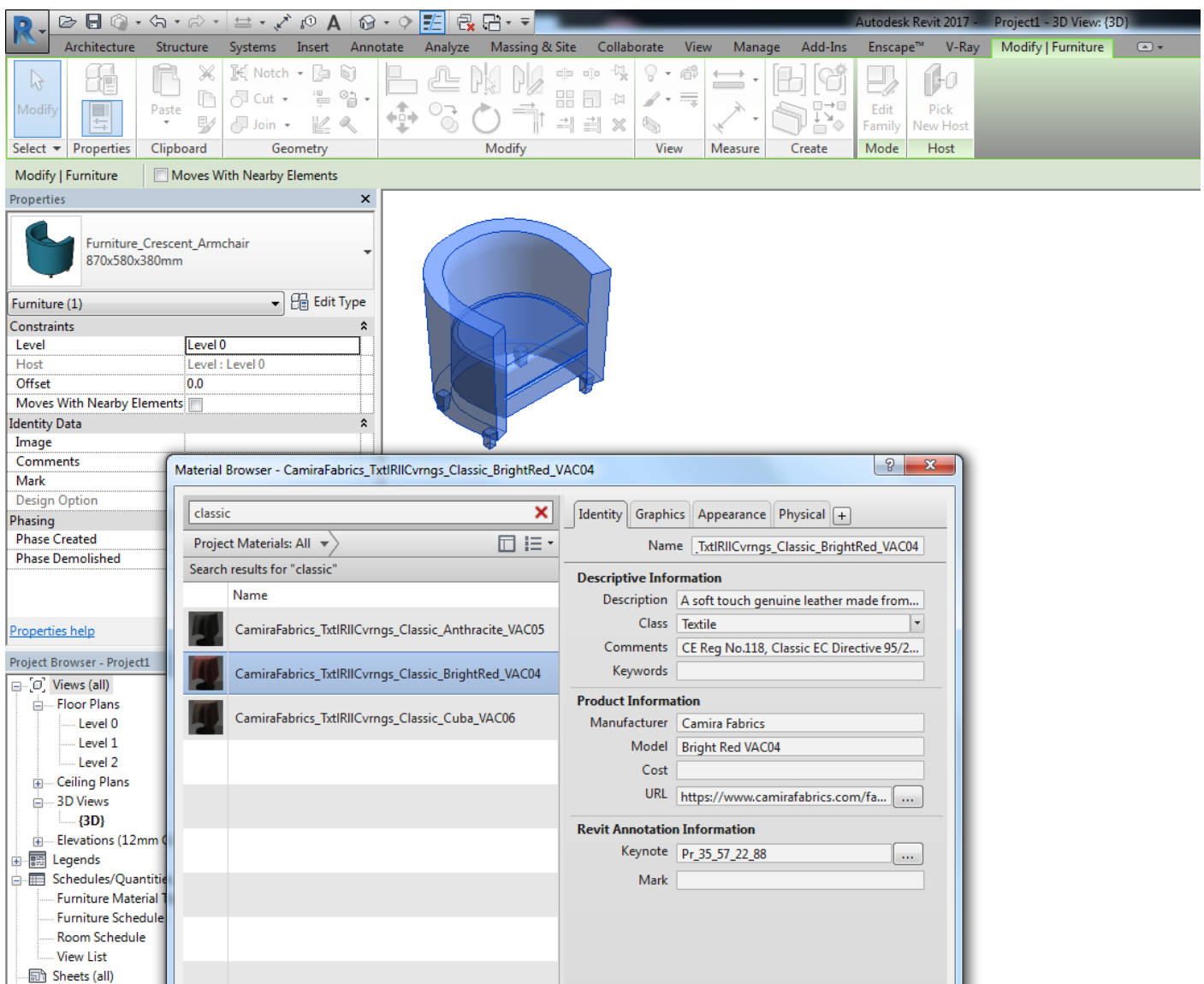
This fabric range is created in a Revit Project containing multiple finishes. Open the RVT file, click the sample or samples you wish to transfer to your project then click 'copy to clipboard'. Open your active project and click 'paste', the selected materials and its data will now be available.



A simple guide to using your Revit Ready file.

2. USE IT

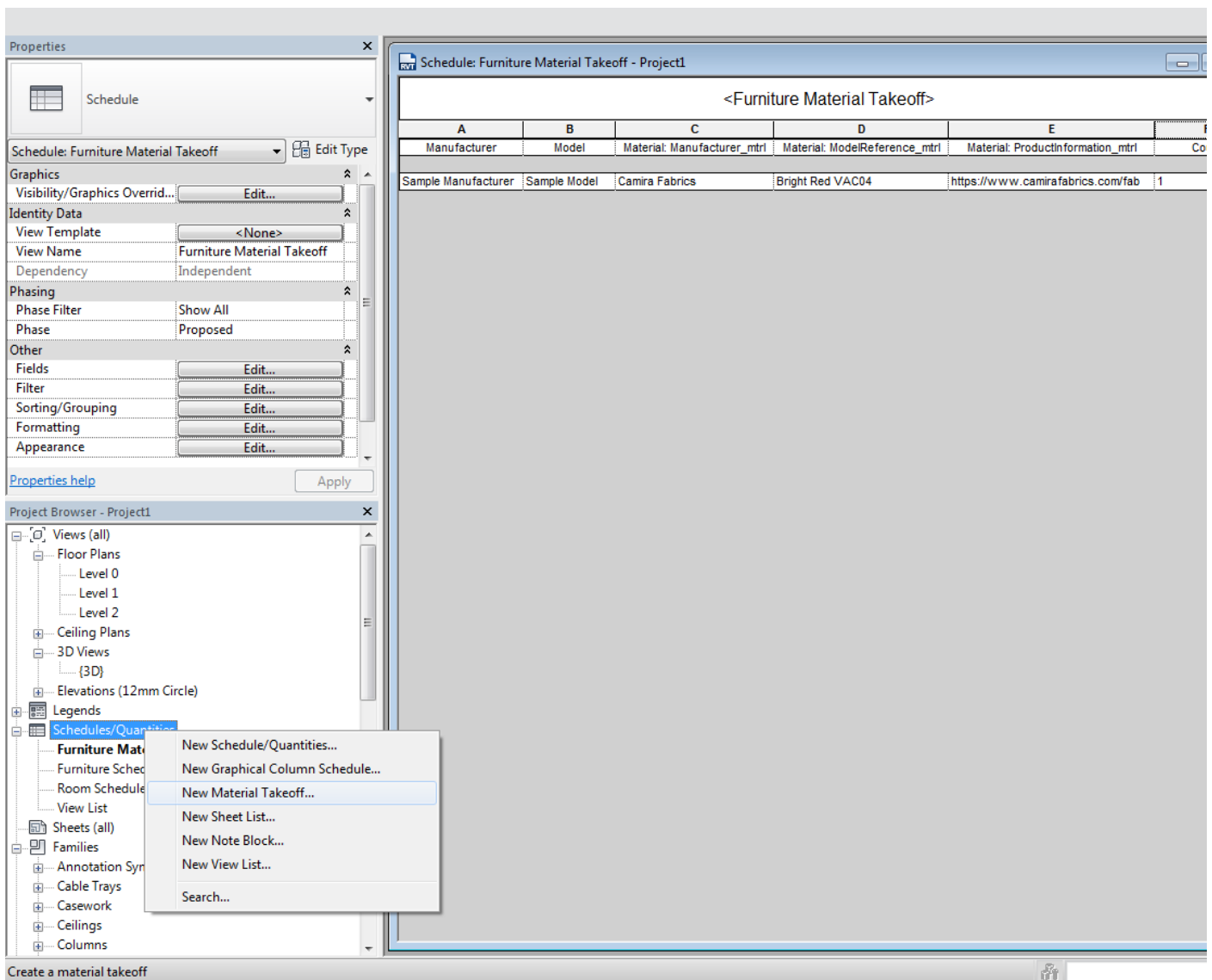
Click an item with a material parameter and open the material browser via this parameter. Search the desired fabric range, single click the sample for the data to appear and double check to activate.



A simple guide to using your Revit Ready file.

3. SCHEDULE IT

Creating a 'Material Takeoff' by right clicking 'Schedules/Quantities' will provide an itemised list of fabrics including information such as where they is applied and an URL directing to the sample.



Additional information

This component has been created by Diane Butterworth Ltd following the manufacturer's specification.

We hope our Revit files are a helpful tool in space planning and visualisation. We take care in ensuring all dimensions and features match manufacturer's literature, however actual product may vary slightly.

We would love to hear from you if you have any questions or feedback, please email hello@dianebutterworth.com

Thank you for using this BIM file,

