

# Sumi

A worsted wool fabric for upholstery, panels, and curtains & drapes.

**Available in 27 Colourways**



**camira**



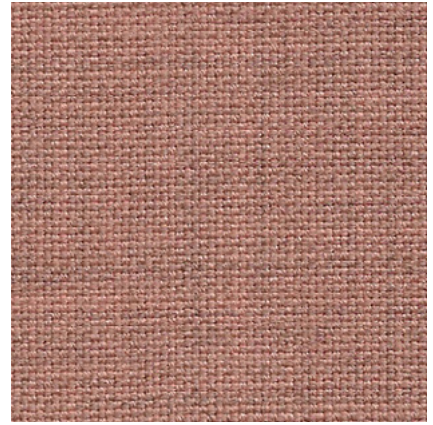
# Sumi, impeccable simplicity

A delicate worsted wool woven using fine marl yarns, Sumi blends the influence of Japan with muted Scandi aesthetics to create an understated, elegantly refined fabric.

With a palette encompassing grounding neutrals, delicate pastels, and deeply saturated shades, this book illustrates a selection of inspirational Sumi colour schemes to bring timeless beauty to commercial and residential interiors.



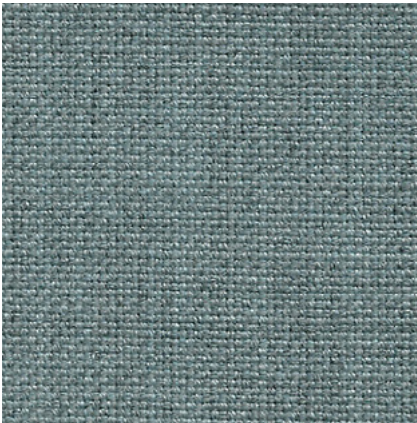
**Zen** SUR04



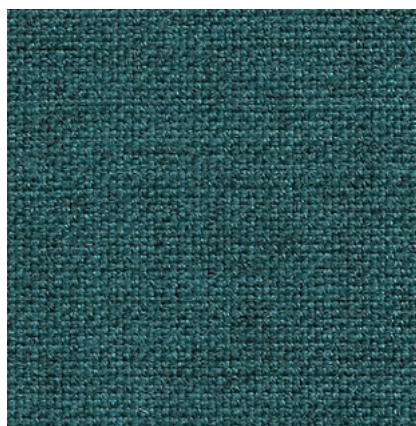
**Narita** SUR13



**Tang** SUR01

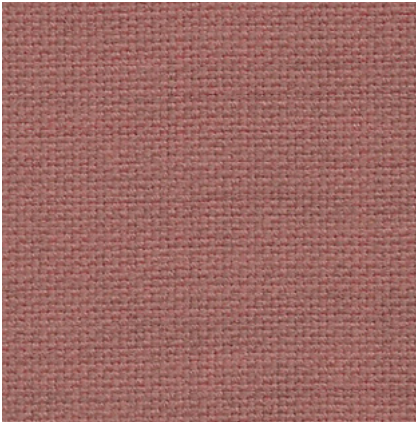


**Tamba** SUR19

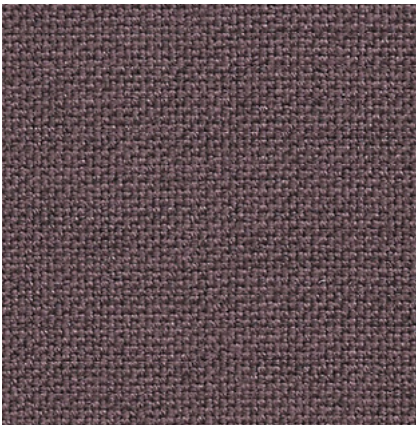


**Daisen** SUR09

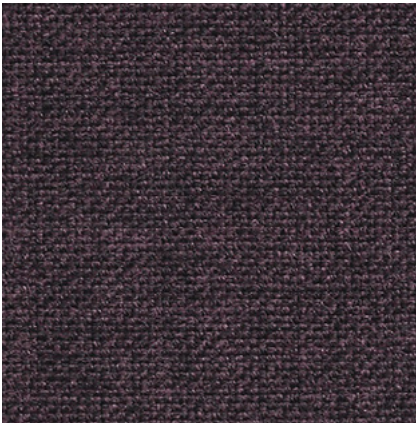




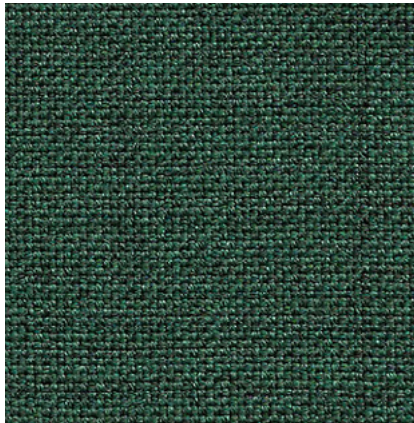
**Yabu** SUR20



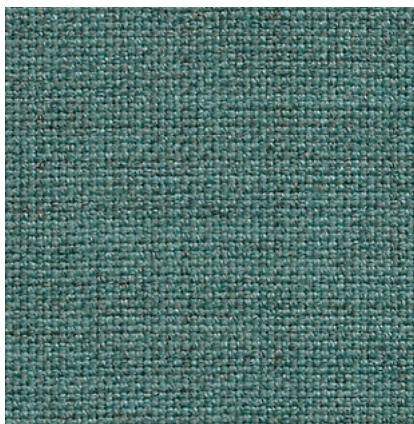
**Nagoya** SUR24



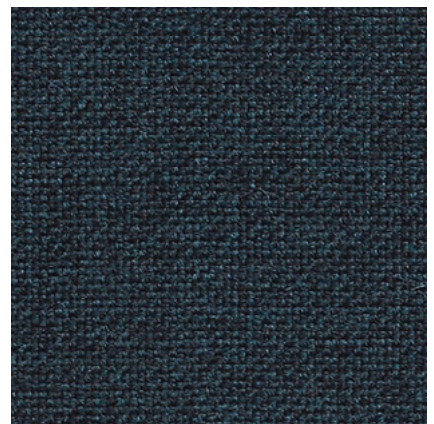
**Otaru** SUR15



**Seto** SUR18



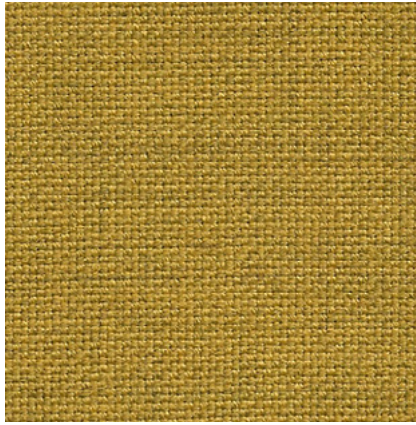
**Handa** SUR10



**Chiba** SUR08



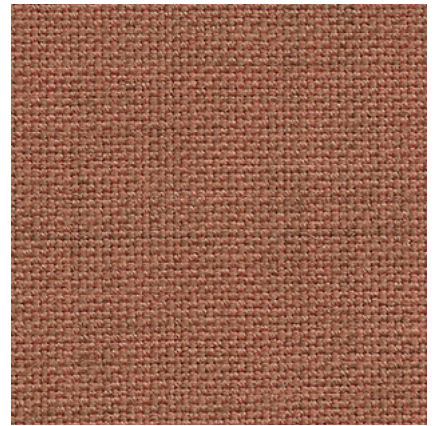
**Noda** SUR14



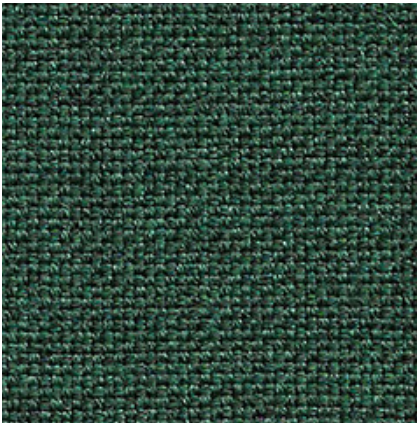
**Tamura** SUR22



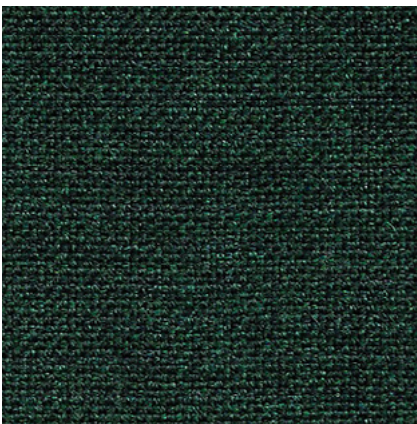
**Yokote** SUR27



**Mito** SUR21

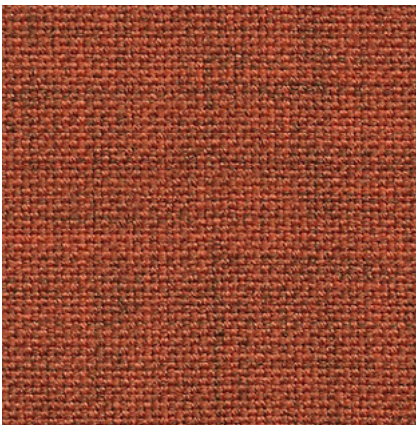


**Seto** SUR18

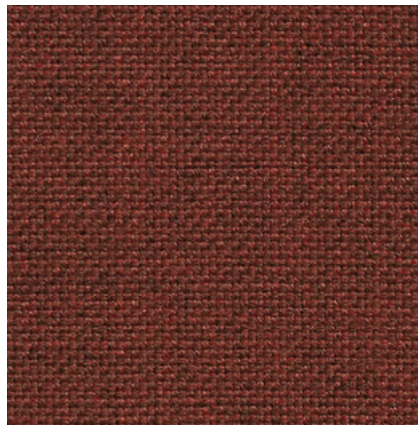


**Kama** SUR16

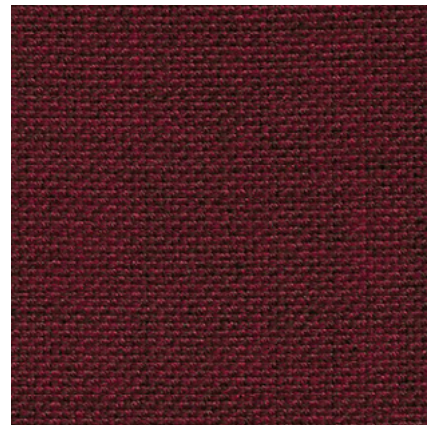




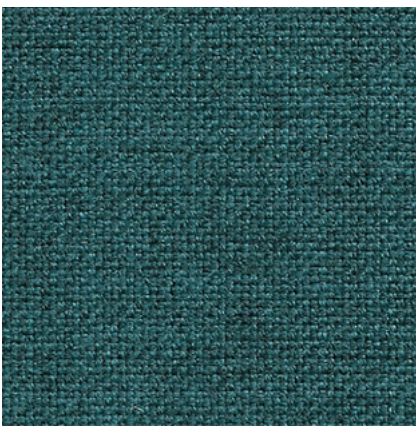
**Tono** SUR23



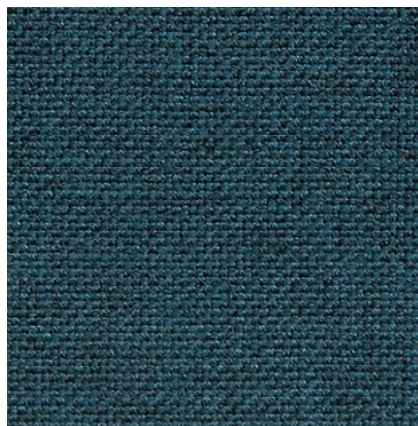
**Mobara** SUR12



**Abiko** SUR07



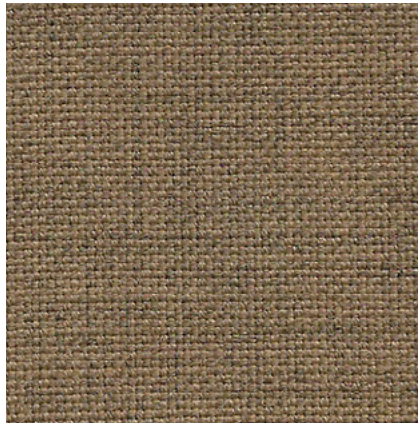
**Daisen** SUR09



**Uto** SUR25



**Zen** SUR04



**Miki** SUR11



**Muso** SUR05

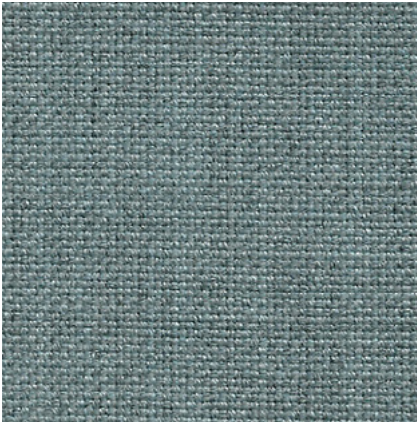


**Osaka** SUR06



**Zushi** SUR26





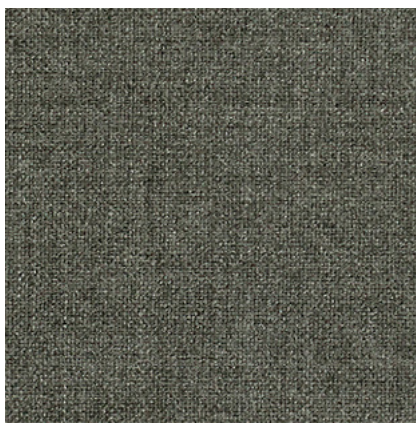
**Tamba** SUR19



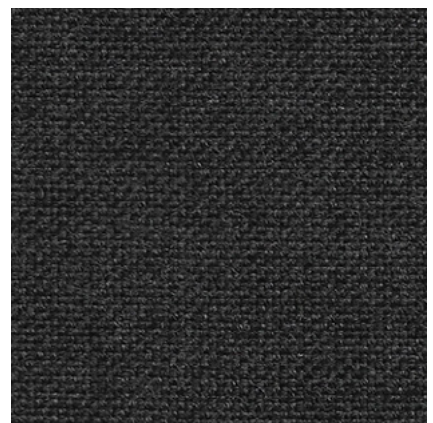
**Tang** SUR01



**Tokyo** SUR02

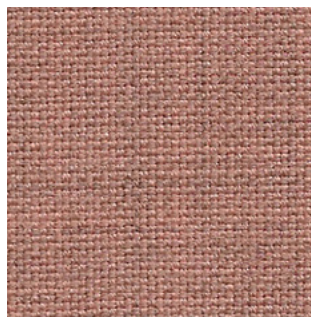


**Kobe** SUR03

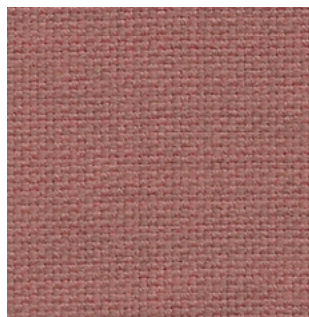


**Nara** SUR17

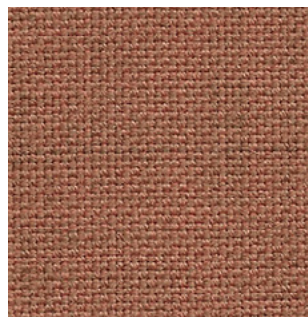
# Colour palette



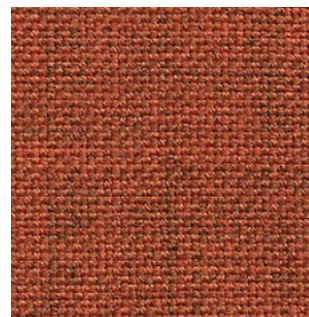
**Narita**  
SUR13



**Yabu**  
SUR20



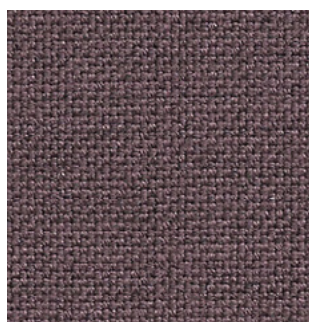
**Mito**  
SUR21



**Tono**  
SUR23



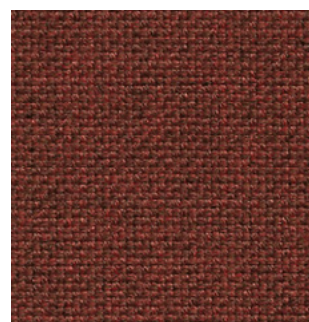
**Otaru**  
SUR15



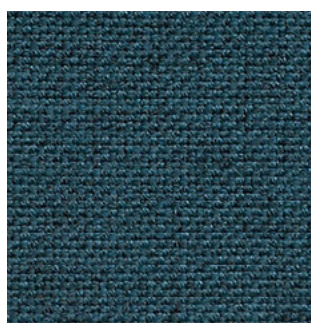
**Nagoya**  
SUR24



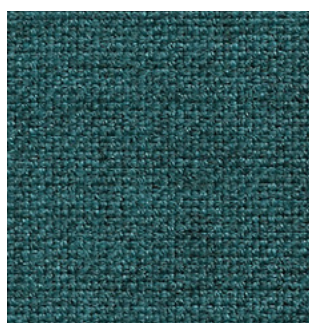
**Abiko**  
SUR07



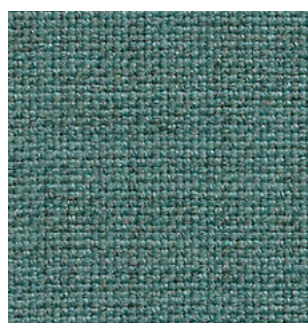
**Mobara**  
SUR12



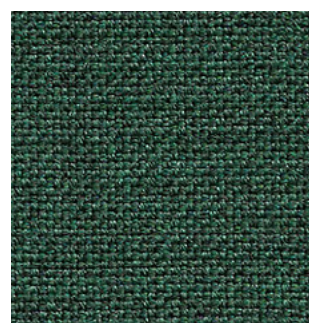
**Uto**  
SUR25



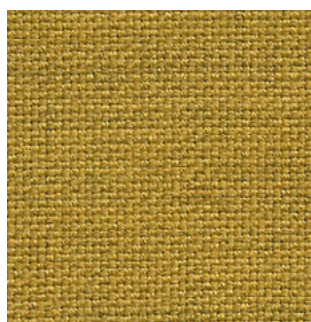
**Daisen**  
SUR09



**Handa**  
SUR10



**Seto**  
SUR18



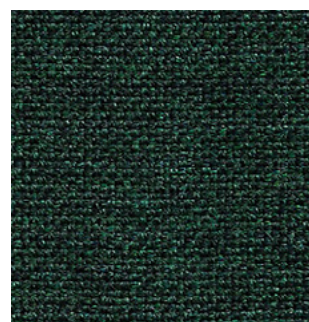
**Tamura**  
SUR22



**Noda**  
SUR14



**Yokote**  
SUR27



**Kama**  
SUR16



**Zen**  
SUR04



**Muso**  
SUR05



**Osaka**  
SUR06



**Miki**  
SUR11



**Tang**  
SUR01



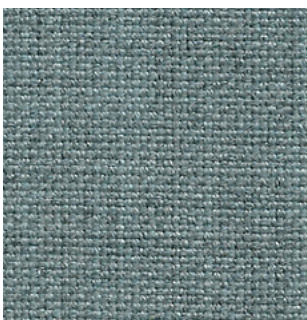
**Tokyo**  
SUR02



**Kobe**  
SUR03



**Zushi**  
SUR26



**Tamba**  
SUR19



**Chiba**  
SUR08



**Nara**  
SUR17

# Specification

## Composition

90% Wool, 10% Polyamide



Task seating



Soft seating



Cigarette  
& Match



Acoustic



Year guarantee



Medium Hazard



Panels



Curtains

With FR Treatment

Understated in its elegance and refined in its colouration, Sumi is a fabric which exudes serenity and style. Woven from worsted wool using fine marl yarns, this natural textile embraces a purity of composition and an impeccably simple aesthetic which makes it both without age, yet achingly current. Evoking the ancient Japanese painting technique from which it takes its name, Sumi's perfectly considered palette of organic, refined hues are made to bring timeless beauty to commercial and residential interiors. Designed to work in harmony with the striated grid of Kyoto, a selection of Sumi's neutral colourways have pairings in this sister range.

## Technical Information

Sumi

---

### Industry Application

Workplace, Education, Hospitality & Lesiure, Home

### Composition

90% Wool, 10% Polyamide

### Environment

Certified to the EU Ecolabel

Certified to Indoor Advantage™ Gold

### Width

138 cm minimum

### Weight

350g/m<sup>2</sup> ±7.5% (483g/lin.m ±7.5%)

### Abrasion Resistance

Heavy duty / 10 year guarantee

Independently certified to ≥200,000 Martindale cycles

### Flammability

EN 1021 - 1 (cigarette)

EN 1021 - 2 (match)

BS 7176 Low Hazard

NF D 60-013

UNI 9175 Classe 1 IM

IMO FTP Code (Part 8)

The Furniture and Furnishing (Fire Safety) Regulations

1988 (UK domestic cigarette and match)

### Optional: Please specify when ordering:

BS 5852 Ignition Source 5 with EnviroFlam5

BS 7176 Medium Hazard with EnviroFlam5

BS 476 Part 7 Class 1 (Adhered) when FR treated

BS 476 Part 6 Class 0 (Adhered) when FR treated

EN 13501-1 Adhered Class B, s1, d0 when FR treated

BS 5867-2: Type B Curtains & Drapes when FR treated

IMO FTP Code (Part 7) when FR treated

*Note: Flammability performance is dependent*

*on components used. Our certificates show*

*what substrates have been used in our tests. For*

*composite tests customers must ensure their*

*complete furniture meets the necessary standards.*

### Light Fastness

4-6 (ISO 105 - B02)

### Fastness to Rubbing

Wet: 4, Dry: 4 (ISO 105 - X12)

### Acoustic Properties

Acoustically transparent. Acoustic

graphs available upon request

### Cleaning

Vacuum regularly. Wipe with a damp cloth using

soap and water or use proprietary upholstery

shampoo. For deeper cleaning use steam or

professionally dry clean. Full details can be

found in our cleaning and disinfection guide.

---

(TSR7)

\*Abrasion testing produces a wide variability of results even from the same test sample. The independent certificate of ≥200,000 cycles is available on our website or from our customer service team. Internally we specify this product at >150,000 cycles which we believe is realistic for repeatability of testing. Please be aware that abrasion testing alone is not a reliable indicator of the actual wear performance of fabrics. We're so confident in the durability of our products that we provide a robust 10 year guarantee (full details available). Please note that seam performance is dependent on seam construction and needle and thread type. We recommend that appropriate sewing advice be taken. Batch to batch variations in shade may occur within commercial tolerances. We reserve the right to alter technical specifications without notice. The Unregistered Design Rights and the Copyright in all designs are the exclusive property of Camira Fabrics Limited.

[www.camirafabrics.com](http://www.camirafabrics.com)