

Fusion

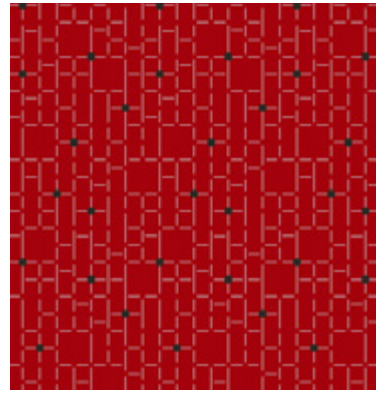
camira



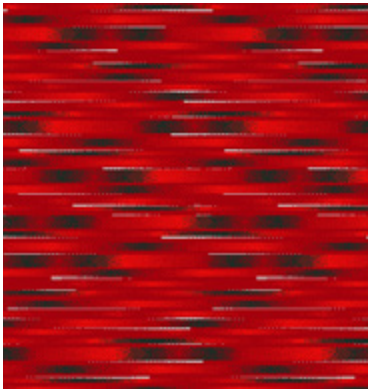
NAEB11



NBSB11



NBTB11



NBXB11



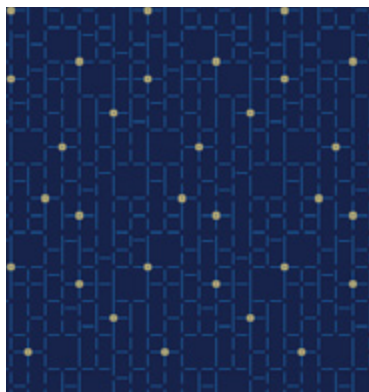
NBRB11



NBRB12



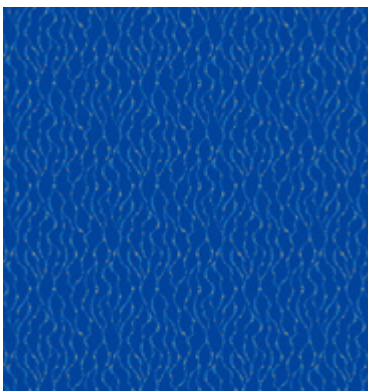
NBPB11



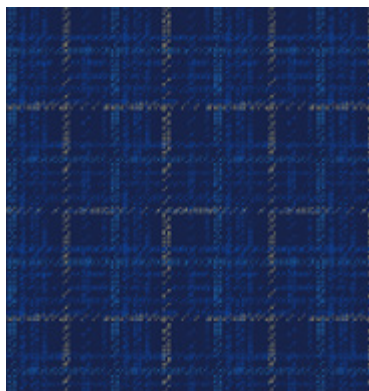
NBTB12



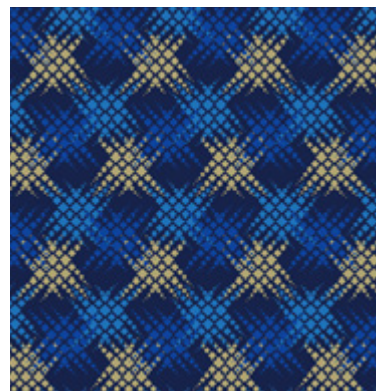
NAEB12



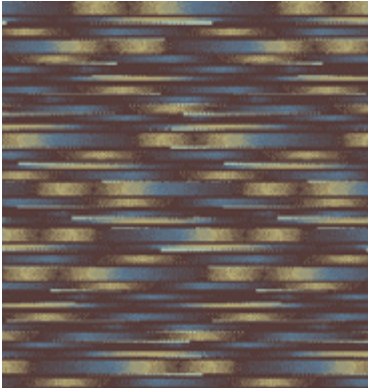
NCAB12



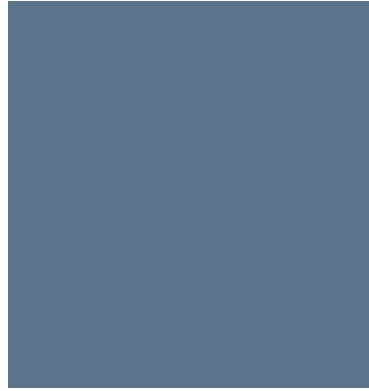
NBYB12



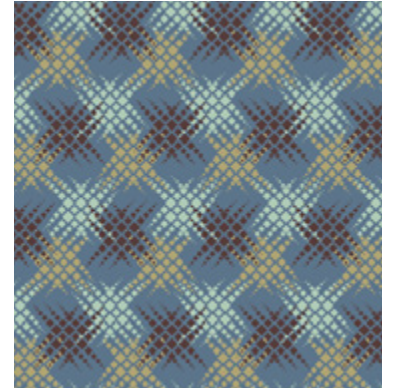
NBPB12



NBXB07



NADB07



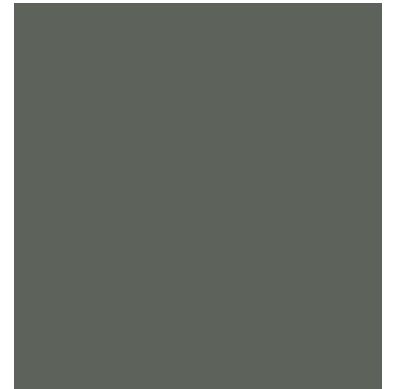
NBVB07



NBUB10



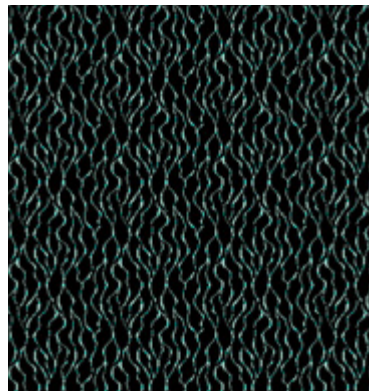
NBUB07



NADB10



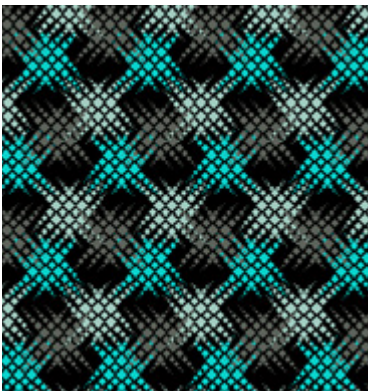
NBWB10



NBSB10



NCBB10



NBPB10

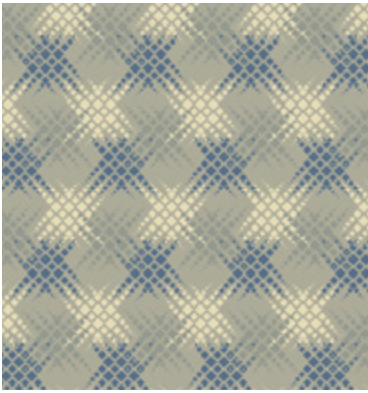


NBWB07

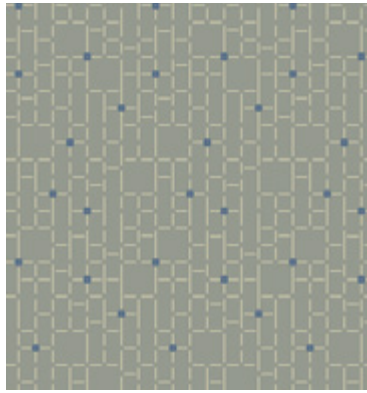


NBYB07

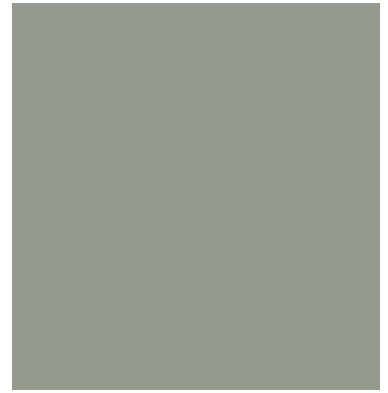
Photographic fabric scans are not color accurate. Always request actual fabric samples before ordering.



NVBV08



NBTB08



NAEB08



NBRB08



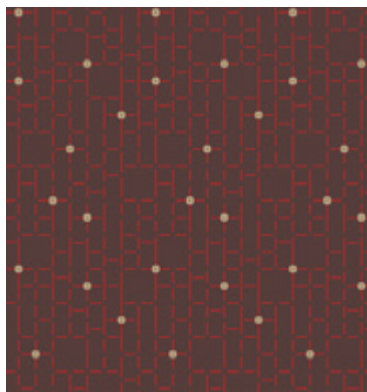
NBQB08



NBSB08



NBRB09



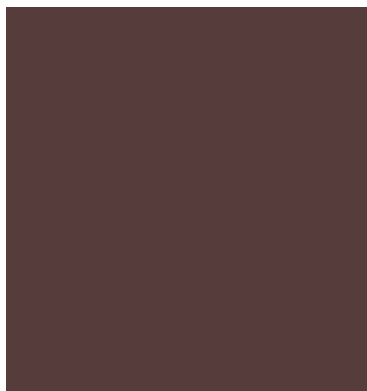
NBTB09



NBSB09



NBYB09



NAEB09



NBZB09



Transport
seating



Year guarantee

Fusion is a high content wool moquette fabric with a great environmental profile. It's 10% lighter in weight compared to traditional pile fabrics, saving raw materials and giving fuel saving potential, without compromising technical performance.

Comprising a variety of designs, the range offers a mixed palette of subtle trend colors and traditional brights.

Technical information

EN

Composition

Pile: 60% Wool, 16% Nylon, 13% Viscose, 11% Polyester
Backing: 67% Polyester, 33% Viscose

Width

59 inches minimum

Weight

21^{1/4} oz/sq yd ±5% (35^{1/4} oz/running yd ±5%)

Thickness

0.137 inches (BS 4051)

Abrasion Resistance

≥80,000 Martindale cycles (EN ISO 12947-2)

Flammability*
FMVSS 302

Note: Flammability performance is dependent on components used. Our certificates show what substrates have been used in our tests. For composite tests customers must ensure their complete furniture meets the necessary standards.

Light Fastness

6 (BS EN ISO 105 B02)

Fastness to Rubbing

Wet: 4, Dry: 4 (BS EN ISO 105 X12)

Maintenance

Vacuum regularly. Wipe clean with a damp cloth or shampoo using proprietary upholstery shampoo.

Color Matching

Batch to batch variations in shade may occur within commercial tolerances.

* Flammability performance is dependent on components used. FR post-treatments may be required to meet specific standards. Further information can be provided on request. Post treatments may change the technical performance and appearance of a product.

The Unregistered Design Rights and the Copyright in all designs are the exclusive property of Camira Fabrics Limited.

F

Composition

Surface: 60% Laine, 16% Nylon, 13% Viscose, 11% Polyester
Couche Inférieure: 67% Polyester, 33% Viscose

Largeur

59 pouces minimum

Poids

21^{1/4} oz/sq yd ±5% (35^{1/4} oz/lin.yd ±5%)

Épaisseur

0.137 pouces (BS 4051)

Résistance à l'abrasion

≥80,000 Martindale tours (EN ISO 12947-2)

Flammabilité*

FMVSS 302

Note: La performance de flammabilité dépend des composantes utilisées. Nos certificats indiquent les substrats utilisés dans nos tests. Pour les tests composites, les clients doivent s'assurer que leurs meubles complets satisfont aux normes nécessaires.

Solidité à la lumière

6 (BS EN ISO 105 B02)

Solidité au frottement

Mouillé: 4, Sec: 4 (BS EN ISO 105 X12)

Nettoyage

Aspirer régulièrement. Essuyer avec une étoffe humide ou nettoyer à l'aide d'un produit approprié pour tissus d'ameublement.

Standardisation des coloris

Variations de coloris d'un bain à un autre peuvent se manifester.

*La performance d'inflammabilité dépend des composantes utilisées. Les traitements postérieurs FR peuvent être nécessaires pour respecter des normes spécifiques. Plus amples renseignements peuvent être fournis sur demande. Les traitements supplémentaires post-production peuvent altérer les performances techniques et l'apparence d'un produit.

Les Droits de Conception non-enregistrés et les droits d'auteur de tous les motifs sont la propriété exclusive de Camira Fabrics Limited.

ES

Composición

Superficie: 60% Lana, 16% Nylon, 13% Viscose, 11% Poliéster
Sustrato: 67% Poliéster, 33% Viscose

Ancho

59 pulgadas mínimo

Peso

21^{1/4} oz/sq yd ±5% (35^{1/4} oz/lin.y ±5%)

Espesor

0.137 pulgadas (BS 4051)

Resistencia a la abrasión

≥80,000 Martindale ciclos (EN ISO 12947-2)

Inflamabilidad*

FMVSS 302

Nota: El rendimiento de la inflamabilidad depende de los componentes usados. Nuestros certificados muestran qué substratos se han usado en nuestros tests. Para tests compuestos nuestros clientes deben asegurar si sus muebles cumplen la normativa al uso.

Solidez a la luz

6 (BS EN ISO 105 B02)

Solidez al rozamiento

Húmedo: 4, Seco: 4 (BS EN ISO 105 X12)

Limpieza

Limpiar con aspiradora frecuentemente. Bien lavar con un paño húmedo o con un champú apropiado para tapicería.

Continuidad de colores

Cada tintada puede tener pequeñas variaciones en el tono dentro de las tolerancias comerciales aceptadas.

* El rendimiento de la inflamabilidad depende de los componentes utilizados. Post-tratamientos de FR pueden ser requeridos para cumplir con estándares específicos. Más información se puede proporcionar a petición. Los tratamientos adicionales pueden cambiar el rendimiento técnico y la apariencia de un producto.

Los derechos sobre los diseños no registrados y los derechos de autor en todos los diseños son propiedad exclusiva de Camira Fabrics Limited.