

**Synergy**

**camira**



**Bracket**  
LDS23



**Summon**  
LDS45



**Lateral**  
LDS28



**Relate**  
LDS44



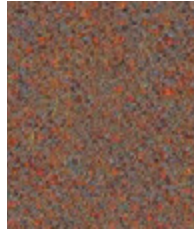
**Marry**  
LDS43



**Loop**  
LDS18



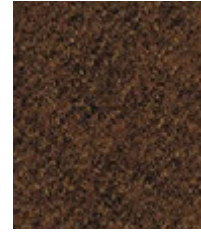
**Frame**  
LDS22



**Success**  
LDS76



**Linea**  
LDS37



**Collective**  
LDS39



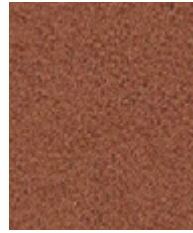
**Affinity**  
LDS74



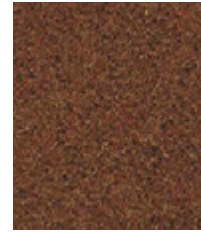
**Contribution**  
LDS75



**Work**  
LDS73



**Combo**  
LDS77



**Cordial**  
LDS78



**Congregate**  
LDS83



**Likeness**  
LDS82



**Similar**  
LDS81



**Mutual**  
LDS84



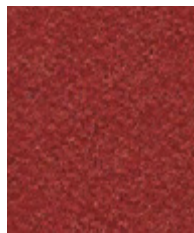
**Global**  
LDS86



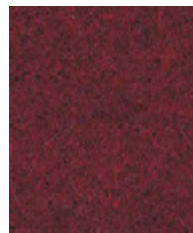
**Open**  
LDS71



**Apt**  
LDS80



**Share**  
LDS85



**Values**  
LDS87



**Amiable**  
LDS79



**Fate**  
LDS07



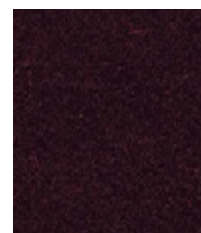
**Compose**  
LDS72



**Medley**  
LDS36



**Together**  
LDS70

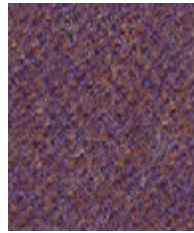


**Process**  
LDS88

Photographic fabric scans are not color accurate. Always request actual fabric samples before ordering.



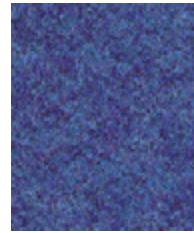
**Venture**  
LDS05



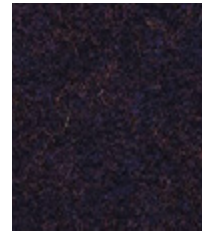
**Fellowship**  
LDS66



**Warmth**  
LDS67



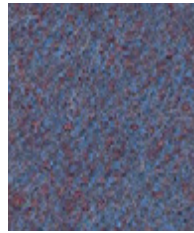
**Collaborate**  
LDS68



**Assemble**  
LDS61



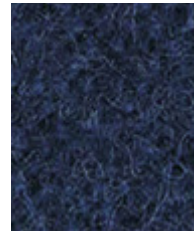
**Huddle**  
LDS65



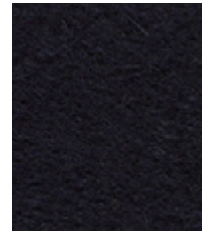
**Order**  
LDS64



**Guild**  
LDS63



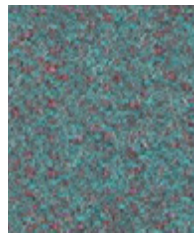
**Alike**  
LDS62



**Sync**  
LDS69



**Support**  
LDS55



**Kinship**  
LDS56



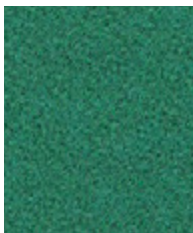
**Engage**  
LDS57



**Family**  
LDS58



**Unity**  
LDS38



**Comply**  
LDS52



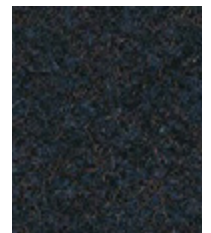
**Kindness**  
LDS51



**League**  
LDS50



**Group**  
LDS59



**Accord**  
LDS60



**Regard**  
LDS54



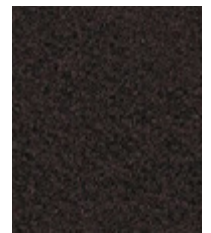
**Pact**  
LDS53



**Integrate**  
LDS47



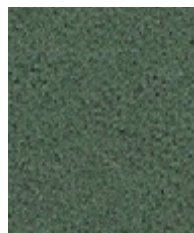
**Couple**  
LDS41



**Bridge**  
LDS26



**Gather**  
LDS46



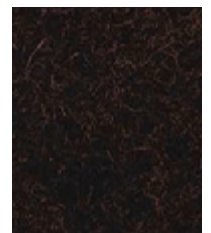
**Append**  
LDS49



**Interfuse**  
LDS48



**Intertwine**  
LDS42



**Co-operate**  
LDS40

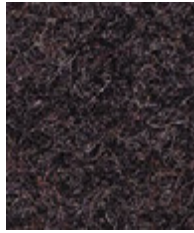
Photographic fabric scans are not color accurate. Always request actual fabric samples before ordering.



**Chain**  
LDS19



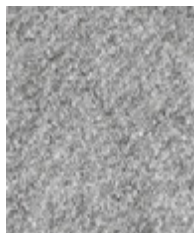
**Tag**  
LDS33



**Wed**  
LDS34



**Affix**  
LDS32



**Serendipity**  
LDS08



**Partner**  
LDS16



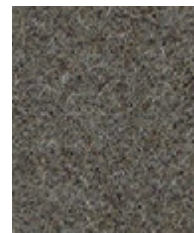
**Mix**  
LDS17



**Level**  
LDS20



**Pair**  
LDS31



**Chemistry**  
LDS35



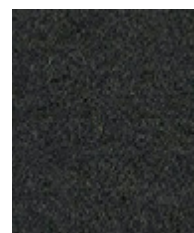
**Hook**  
LDS29



**Team**  
LDS21



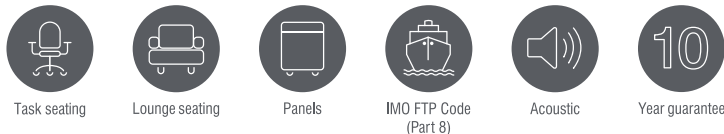
**Bond**  
LDS24



**Compound**  
LDS25



**Seek**  
LDS27



With Treatment



Epitomising natural simplicity, Synergy is a wool rich fabric which is at once both irresistibly soft and ultra-high performing. Delicately felted, with a beautifully relaxed drape, the understated aesthetics showcase the intriguing coloration of this considered textile. Featuring exquisite fiber dyed shades and sumptuous piece dyed solids within its palette of 75 colorways, there truly is a tone for every scheme.



Synergy meets the ACT voluntary Performance Guidelines and is classified for Heavy Duty Upholstery.



## Technical information

### EN

#### Composition

95% Pure New Wool, 5% Nylon

#### Environment

Certified to the EU Ecolabel  
Certified to Indoor Advantage™ Gold

#### Width

54 inches minimum

#### Weight

11<sup>3/4</sup> oz/sq yd ±5% (17<sup>3/4</sup> oz/running yd ±5%)

#### Abrasion Resistance\*

D4966 Martindale method, Heavy Duty Upholstery  
Independently certified to ≥100,000 cycles  
Covered by a full and comprehensive 10 year guarantee (full details available)

#### Flammability

California Technical Bulletin 117  
NFPA 260 + UFAC - Class 1  
BS 7176 Low Hazard  
ASTM E84 Class 2 or B (Adhered)  
ASTM E84 Class 2 or B (Un-adhered)  
IMO FTP Code (Part 8)

#### Optional please specify when ordering:

BS 7176 Medium Hazard when FR treated  
ASTM E84 Class 1 or A (Adhered) when FR treated  
NFPA 701 when FR treated

*Note: Flammability performance is dependent on components used. Our certificates show what substrates have been used in our tests. For composite tests customers must ensure their complete furniture meets the necessary standards.*

#### Color Fastness to Light

AATCC-16 (40 hours) Class 4

#### Color Fastness to Crocking

AATCC-8 (Dry: 4, Wet: 3)

#### Acoustic Properties

Acoustically transparent, Acoustic graphs available upon request.

#### Cleaning

W/S

Clean with a water-based cleaning agent or solvent: Depending on the stain, you can use a dry-cleaning solvent, the foam of a mild detergent, or upholstery shampoo.

\*Abrasion test results exceeding ACT Performance Guidelines are not an indicator of product lifespan. Multiple factors affect fabric durability and appearance retention. We're confident in the durability of our products so we provide a robust 10 year guarantee (full details available). This product is externally certified, details of which are on our website and available from our customer services team. Batch to batch variations in shade may occur within commercial tolerances. We reserve the right to alter technical specifications without notice. The Unregistered Design Rights and the Copyright in all designs are the exclusive property of Camira Fabrics Limited.

### F

#### Composition

95% Pure Laine Vierge, 5% Nylon

#### Écologique

Avec le certificat EU Ecolabel  
Certifié à Indoor Advantage™ Gold

#### Largeur

54 pouces minimum

#### Poids

11<sup>3/4</sup> oz/sq yd ±5% (17<sup>3/4</sup> oz/yd.lin ±5%)

#### Résistance à l'abrasion\*

D4966 Martindale method, Heavy Duty Upholstery  
Certificat indépendant ≥100,000 cycles  
Avec une garantie totale de durabilité de 10 ans (renseignements complémentaires disponibles)

#### Flammabilité

California Technical Bulletin 117  
NFPA 260 + UFAC - Class 1  
BS 7176 Low Hazard  
ASTM E84 Class 2 or B (Adhered)  
ASTM E84 Class 2 or B (Un-adhered)  
IMO FTP Code (Part 8)

#### Prière de le mentionner lors de la commande:

BS 7176 Medium Hazard si traitement FR  
ASTM E84 Class 1 or A (Adhered) si traitement FR  
NFPA 701 si traitement FR

*Notez: La performance de flammabilité dépend des composantes utilisées. Nos certificats indiquent les substrats utilisés dans nos tests. Pour les tests composites, les clients doivent s'assurer que leurs meubles complets satisfont aux normes nécessaires.*

#### Solidité à la Lumière

AATCC-16 (40 heures) Class 4

#### Solidité à la Crocking

AATCC-8 (Sec: 4, Mouillé: 3)

#### Propriétés Acoustiques

Acoustiquement transparent. Graphiques acoustiques disponibles sur demande.

#### Nettoyage

W/S

Nettoyer avec un produit d'entretien à base d'eau: en fonction de la tâche, vous pouvez nettoyer à sec, à l'aide d'un détergent ou bien avec du shampooing pour meubles.

\*Les résultats des tests d'abrasion dépassant les directives de performance ACT ne sont pas un indicateur de la durée de vie du produit. De multiples facteurs affectent la durabilité du tissu et la conservation de son apparence. Nous sommes confiants dans la durabilité de nos produits, nous offrons donc une solide garantie de 10 ans (tous les détails sont disponibles). Ce produit est certifié en externe, dont les détails sont sur notre site Web et disponible auprès de notre équipe de service à la clientèle. Des variations de teinte d'un lot à l'autre peuvent se produire dans les tolérances commerciales. Nous nous réservons le droit de modifier les spécifications techniques sans préavis. Les droits de conception non enregistrés et le droit d'auteur sur toutes les conceptions sont la propriété exclusive de Camira Fabrics Limited.

### ES

#### Composición

95% Pura Lana Virgen, 5% Nylon

#### Ambiental

Certificado con EU Ecolabel  
Certificado de Indoor Advantage™ Gold

#### Ancho

54 pulgadas mínimo

#### Peso

11<sup>3/4</sup> oz/sq yd ±5% (17<sup>3/4</sup> oz/lin.y ±5%)

#### Resistencia a la abrasión\*

D4966 Martindale method, Heavy Duty Upholstery  
independientemente del certificado de ≥100,000 ciclos  
Con garantía de uso 10 años (más información disponible bajo consulta)

#### Inflamabilidad

California Technical Bulletin 117  
NFPA 260 + UFAC - Class 1  
BS 7176 Low Hazard  
ASTM E84 Class 2 or B (Adhered)  
ASTM E84 Class 2 or B (Un-adhered)  
IMO FTP Code (Part 8)

#### Por favor especificar cuando se requiere en el pedido:

BS 7176 Medium Hazard estando con tratamiento FR  
ASTM E84 Class 1 or A (Adhered) estando con tratamiento FR  
NFPA 701 estando con tratamiento FR

*Nota: El rendimiento de la inflamabilidad depende de los componentes usados. Nuestros certificados muestran qué substratos se han usado en nuestros tests. Para tests compuestos nuestros clientes deben asegurar si sus muebles cumplen la normativa al uso.*

#### Solidez a la Luz

AATCC-16 (40 horas) Class 4

#### Solidez al Rozamiento

AATCC-8 (Seco: 4, Húmedo:3)

#### Acústico Propiedades

Acústicamente transparente, gráficos disponibles bajo petición.

#### Limpeza

W/S

Lavar con un producto de limpieza neutro o solvente: en función de la suciedad o mancha, se puede limpiar con un producto de limpieza en seco, espuma templada o producto de limpieza de sofás.

\*Los resultados de las pruebas de abrasión que exceden las pautas de rendimiento ACT no son un indicador de la vida útil del producto. Múltiples factores afectan la durabilidad y aspecto del tejido. Confiamos en la durabilidad de nuestros productos, por lo que ofrecemos una sólida garantía de 10 años (detalles completos disponibles). Este producto se certifica externamente, todos los detalles están disponibles en nuestra web y el departamento de atención al cliente se los puede facilitar. Pequeñas variaciones de color entre diferentes tintadas son posibles dentro de las tolerancias comerciales. Nos reservamos el derecho a modificar las especificaciones técnicas sin previo aviso. Los derechos de diseño no registrados y el copyright de todos nuestros diseños son propiedad exclusiva de Camira Fabrics Limited.