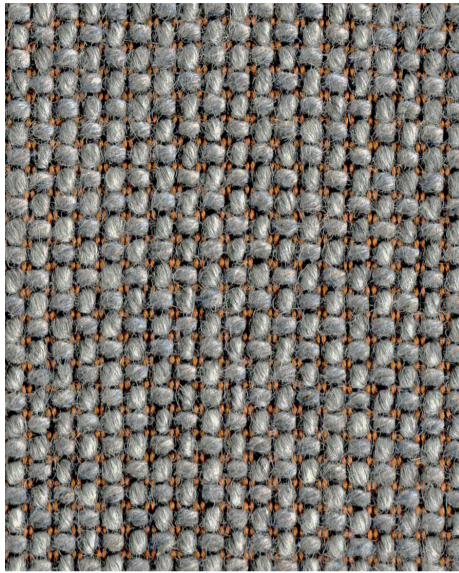


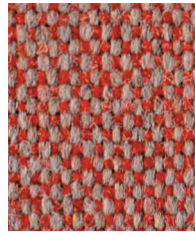
The image shows a close-up of four folded fabric swatches, likely made of flax, arranged in a diagonal stack from top-left to bottom-right. The colors are vibrant and distinct: a deep red at the top, a rich purple, a bright teal, and a warm gold at the bottom. The texture of the fabric is clearly visible, showing a fine, regular weave pattern. The lighting is soft, highlighting the texture and the slight shadows between the folds.

Craggan Flax: Colour rotations

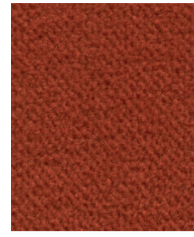
camira



Craggan Flax
Bracken CRA03



Main Line Flax
Barbican MLF03



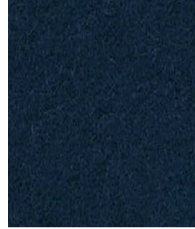
Regent
Wintergarden REG02



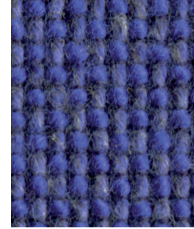
Sumi
Tokyo SUR02



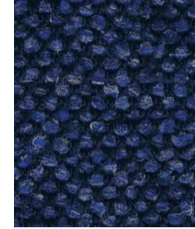
Synergy
Affinity LDS74



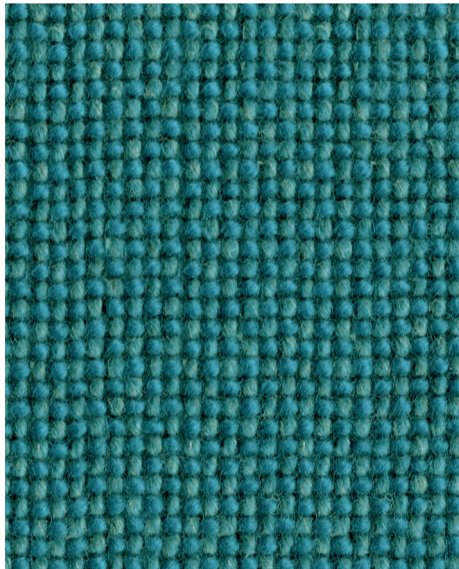
Blazer
Edinburgh CUZ1Y



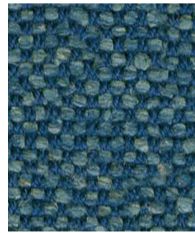
Craggan Flax
Trek CRA18



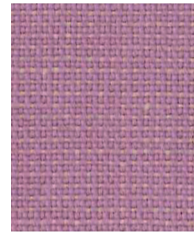
Silk
Chancellor SLK19



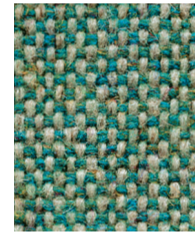
Craggan Flax
Loch CRA19



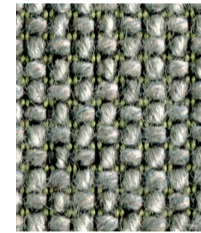
Silk
Monarch SLK15



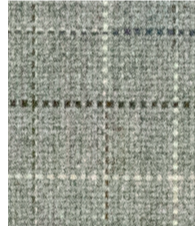
Patina
Striated PAT40



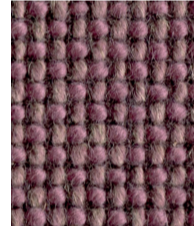
Main Line Flax
Bayswater MLF24



Craggan Flax
Marsh CRA04



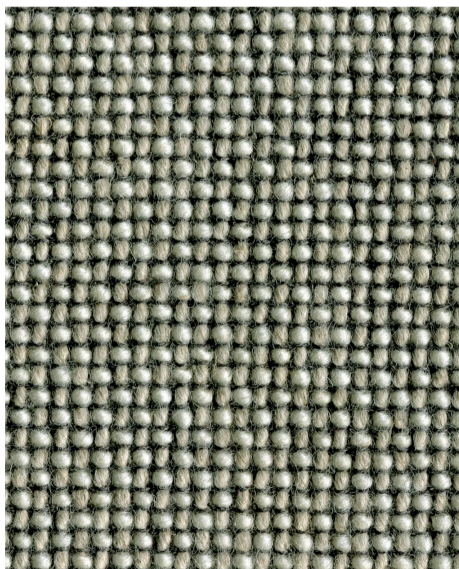
Kyoto
Tokyo KOY02



Craggan Flax
Wold CRA15



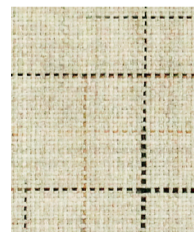
Blazer
Barnard CUZ2S



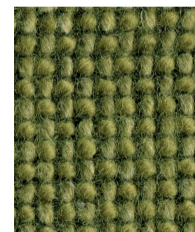
Craggan Flax
Esker CRA21



Blazer
Dartmouth CUZ2Q



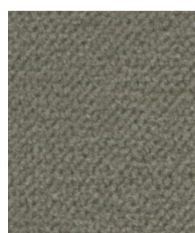
Kyoto
Zen KOY04



Craggan Flax
Brae CRA20



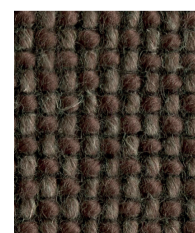
Synergy
Interfuse LDS48



Regent
Muso REG23



Kyoto
Muso KOY05



Craggan Flax
Drumlin CRA12



Blazer
Kingsmead CUZ67