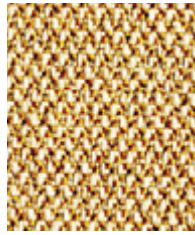


Era

camira



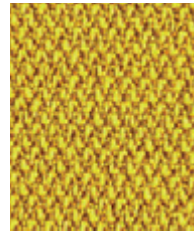
Transition
CSE30



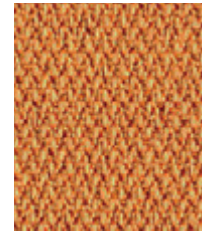
Splitsecond
CSE31



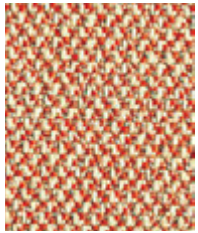
Lifetime
CSE03



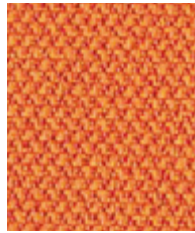
Occasion
CSE32



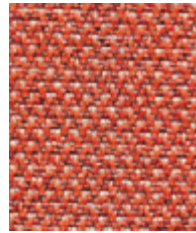
Measure
CSE27



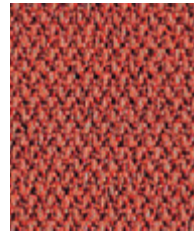
Sequence
CSE25



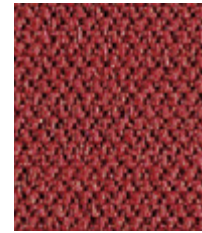
Span
CSE05



Turn
CSE26



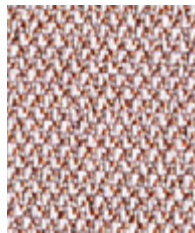
Experience
CSE29



Extent
CSE28



Calendar
CSE19



Date
CSE24



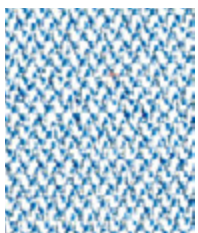
Cycle
CSE06



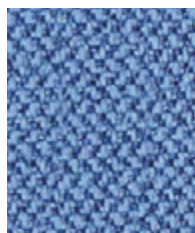
Phase
CSE17



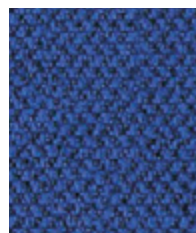
Prime
CSE09



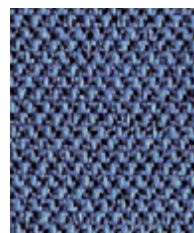
Allowance
CSE38



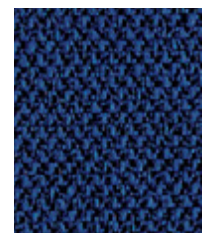
Chapter
CSE08



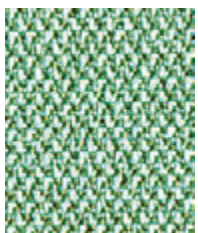
Perennial
CSE12



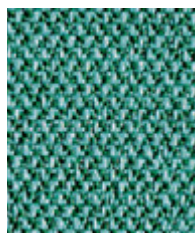
Range
CSE42



Maturity
CSE40



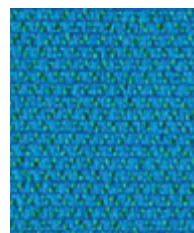
Notation
CSE36



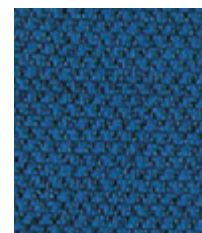
Rest
CSE37



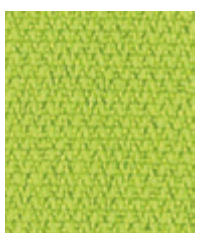
Aeon
CSE20



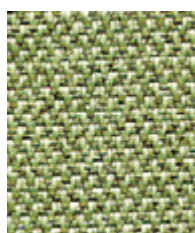
Everlasting
CSE10



Stage
CSE15



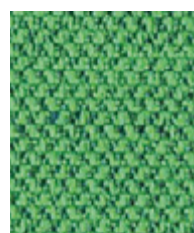
Period
CSE07



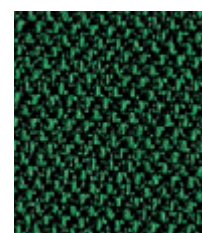
Endurance
CSE34



Timelapse
CSE16



Event
CSE18



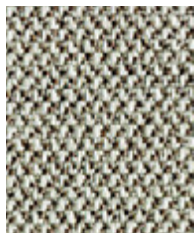
Signature
CSE35



Analogue
CSE33



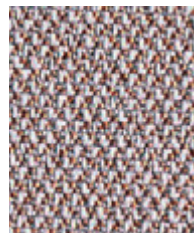
Futurist
CSE01



Prompt
CSE45



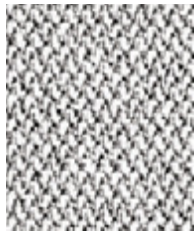
Generation
CSE02



Occurrence
CSE23



History
CSE21



Memo
CSE46



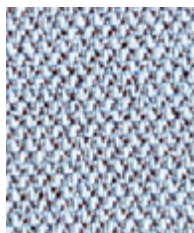
Quota
CSE41



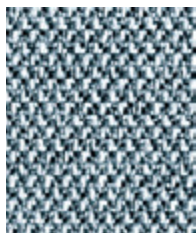
Forecast
CSE11



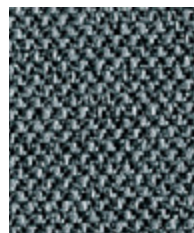
Present
CSE13



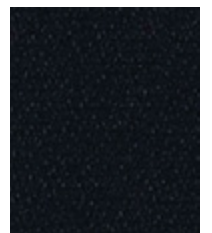
Youth
CSE39



Late
CSE43



Elapse
CSE44



Forward
CSE14



Task seating



Lounge seating



Panels

Bleach
cleanable

Washable



Acoustic



Year guarantee

Era is a subtle, two tone polyester fabric containing stretch in both directions for ease of upholstery. The baby herringbone weave offers an understated contemporary texture while its coloring technique provides close up intrigue. The palette incorporates playful brights and sophisticated muted tones.

STANDARD
10011-43686
Shirley

www.oeko-tex.com



Era meets the ACT voluntary Performance Guidelines and is classified for Heavy Duty Upholstery. Era is a UL Recognized Component.

Technical information

EN

Composition
100% Polyester

Environment
Certified to STANDARD 100 By OEKO-TEX®
Certified to Indoor Advantage™ Gold
Non metallic dyestuffs.

Width
54 inches minimum

Weight
9¹/₂ oz/sq yd ±5% (14¹/₄ oz/running yd ±5%)

Abrasion Resistance*
ASTM D4157 Wyzenbeek method, Heavy Duty Upholstery
Independently certified to ≥100,000 double rubs
Covered by a full and comprehensive 10 year guarantee
(full details available)

Flammability
California Technical Bulletin 117
NFPA 260 + UFAC Class 1
BS 7176 Low Hazard
ASTM E84 Class 1 or A (Adhered)
ASTM E84 Class 1 or A (Un-adhered)
UL 723
Note: Flammability performance is dependent on components used. Our certificates show what substrates have been used in our tests. For composite tests customers must ensure their complete furniture meets the necessary standards.

Color Fastness to Light
AATCC-16 (40 hours) Class 4

Color Fastness to Crocking
AATCC-8 (Dry: 4, Wet: 3)

Acoustic Properties
Acoustically transparent, acoustic graphs available upon request.

Bleach Cleanable
ISO 105 E03 color change 4 for dilution factor 1:4 chlorine solution

Cleaning
W/S
Vacuum regularly. Wipe with a damp cloth using a proprietary upholstery shampoo/soap. For deeper cleaning use steam, bleach, alcohol or professionally dry clean. Can be washed at 140F. Full details can be found in our cleaning and disinfection guide.

*Abrasion test results exceeding ACT Performance Guidelines are not an indicator of product lifespan. Multiple factors affect fabric durability and appearance retention. We're confident in the durability of our products so we provide a robust 10 year guarantee (full details available). This product is externally certified, details of which are on our website and available from our customer services team. Batch to batch variations in shade may occur within commercial tolerances. We reserve the right to alter technical specifications without notice. The Unregistered Design Rights and the Copyright in all designs are the exclusive property of Camira Fabrics Limited.

F

Composition
100% Polyester

Écologique
Certifié à STANDARD 100 By OEKO-TEX®
Certifié à Indoor Advantage™ Gold
Teintures non métalliques.

Largeur
54 pouces minimum

Poids
9¹/₂ oz/sq yd ±5% (14¹/₄ oz/lin. ±5%)

Résistance à l'abrasion*
ASTM D4157 Wyzenbeek method, Heavy Duty Upholstery
Certificat indépendant ≥100,000 double frottement
Avec une garantie totale de durabilité de 10 ans
(renseignements complémentaires disponibles)

Flammabilité
California Technical Bulletin 117
NFPA 260 + UFAC Class 1
BS 7176 Low Hazard
ASTM E84 Class 1 or A (Adhered)
ASTM E84 Class 1 or A (Un-adhered)
UL 723
Notez: La performance de flammabilité dépend des composantes utilisées. Nos certificats indiquent les substrats utilisés dans nos tests. Pour les tests composites, les clients doivent s'assurer que leurs meubles complets satisfont aux normes nécessaires.

Solidité à la Lumière
AATCC-16 (40 heures) Class 4

Solidité à la Crocking
AATCC-8 (Sec: 4 minimum, Mouillé: 3)

Propriétés Acoustiques
Acoustiquement transparent, graphiques acoustiques disponibles sur demande.

Nettoyable au javel
ISO 105 E03 changement de couleur 4 pour le facteur de dilution 1: 4 solution de chlore

Nettoyage
W/S
Passez l'aspirateur régulièrement. Essayez avec un chiffon humide en utilisant un shampooing / savon pour tissus d'ameublement exclusif. Pour un nettoyage en profondeur, utilisez la vapeur, javel, alcool ou un nettoyage à sec professionnel. Peut être lavé à la machine, programme maximum 140F. Vous trouverez tous les détails dans notre guide de nettoyage et de désinfection.

*Les résultats des tests d'abrasion dépassant les directives de performance ACT ne sont pas un indicateur de la durée de vie du produit. De multiples facteurs affectent la durabilité du tissu et la conservation de son apparence. Nous sommes confiants dans la durabilité de nos produits, nous offrons donc une solide garantie de 10 ans (tous les détails sont disponibles). Ce produit est certifié en externe, dont les détails sont sur notre site Web et disponible auprès de notre équipe de service à la clientèle. Des variations de teinte d'un lot à l'autre peuvent se produire dans les tolérances commerciales. Nous nous réservons le droit de modifier les spécifications techniques sans préavis. Les droits de conception non enregistrés et le droit d'auteur sur toutes les conceptions sont la propriété exclusive de Camira Fabrics Limited.

ES

Composición
100% Poliéster

Ambiental
Certificado de STANDARD 100 By OEKO-TEX®
Certificado de Indoor Advantage™ Gold
Tintes no metálicos.

Ancho
54 pulgadas mínimo

Peso
9¹/₂ oz/sq yd ±5% (14¹/₄ oz/lin.y ±5%)

Resistencia a la abrasión*
ASTM D4157 Wyzenbeek method, Heavy Duty Upholstery
independientemente del certificado de ≥100,000
rozamiento doble
Con garantía total de uso 10 años
(más información disponible bajo consulta)

Inflamabilidad
California Technical Bulletin 117
NFPA 260 + UFAC Class 1
BS 7176 Low Hazard
ASTM E84 Class 1 or A (Adhered)
ASTM E84 Class 1 or A (Un-adhered)
UL 723
Nota: El rendimiento de la inflamabilidad depende de los componentes usados. Nuestros certificados muestran qué substratos se han usado en nuestros tests. Para tests compuestos nuestros clientes deben asegurar si sus muebles cumplen la normativa al uso.

Solidez a la Luz
AATCC-16 (40 heures) Class 4

Solidez al Rozamiento
AATCC-8 (Seco: 4, Húmedo: 3)

Acústico Propiedades
Acústicamente transparente, gráficos disponibles bajo petición.

Posibilidad lavado con Lejía
ISO 105 E03 cambio color 4 para un factor de disolución 1:4 solución cloro

Limpieza
W/S
Uso aspirador regularmente. Limpiar con un trapo usando jabón y agua o producto limpieza para tapicerías. Para una limpieza más profunda usen vapor, lejía, alcohol o limpieza en seco. Se puede lavar a 140F. Los detalles completos se encuentran en nuestra guía de limpieza y desinfección.

*Los resultados de las pruebas de abrasión que exceden las pautas de rendimiento ACT no son un indicador de la vida útil del producto. Múltiples factores afectan la durabilidad y aspecto del tejido. Confiamos en la durabilidad de nuestros productos, por lo que ofrecemos una sólida garantía de 10 años (detalles completos disponibles). Este producto se certifica externamente, todos los detalles están disponibles en nuestra web y el departamento de atención al cliente se los puede facilitar. Pequeñas variaciones de color entre diferentes tintados son posibles dentro de las tolerancias comerciales. Nos reservamos el derecho a modificar las especificaciones técnicas sin previo aviso. Los derechos de diseño no registrados y el copyright de todos nuestros diseños son propiedad exclusiva de Camira Fabrics Limited.