

Kork

camira

Photographic fabric scans are not color accurate. Always request actual fabric samples before ordering.



Aroma
WIN01



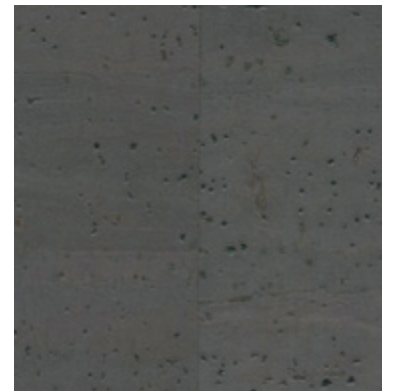
Notes
WIN02



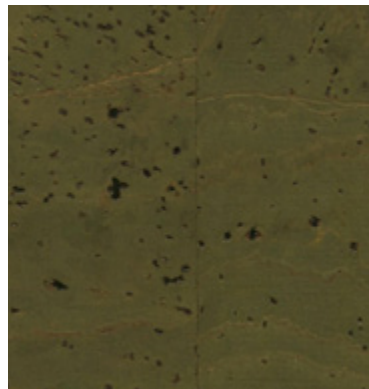
Crisp
WIN03



Smokey
WIN04



Opulent
WIN05



Rich
WIN06



Tannin
WIN07



Panels



Year guarantee

A modern take on a rustic material, Kork blends natural beauty with a stylized aesthetic. With its raw composition softened by its sleek tactility, the organic pattern inherent to the bark is showcased through its delicate colors, making it the ideal material to bring a hint of biophilia to any interior.

Crafted from sustainably and responsibly sourced cork, this innovative panel material truly encapsulates designing with nature.



Kork meets the ACT voluntary Performance Guidelines for panel fabrics.

Technical information

EN

Composition

Surface: 93% Cork, 7% PU
Substrate: 55% PU, 29.5% Polyester, 15.5% Cotton

Width

54 inches minimum

Weight

13^{1/4} oz/sq yd ±10% (20 oz/running yd ±10%)

Flammability

ASTM E84 Class 1 or A (Adhered)
ASTM E84 Class 2 or B (Un-adhered)
Note: Flammability performance is dependent on components used.

Color Fastness to Light

AATCC-16 (40 hours) Class 4

Color Fastness to Crocking

AATCC-8 (Dry: 3, Wet: 3)

Cleaning

W
Spot clean, using the foam only from a water-based cleaning agent, such as a mild detergent or non-solvent upholstery shampoo product.

This product should be adhered using water-based glues. Using any other glues will void the product guarantee.

Batch to batch variations in shade may occur within commercial tolerances. We reserve the right to alter technical specifications without notice. The Unregistered Design Rights and the Copyright in all designs are the exclusive property of Camira Fabrics Limited.

F

Composition

Surface: 93% liège, 7% PU
Couche inférieure: 55% PU, 29.5% polyester, 15.5% Coton

Largeur

54 pouces minimum

Poids

13^{1/4} oz/sq yd ±10% (20 oz/yd.lin ±10%)

Flammabilité

ASTM E84 Class 1 or A (Adhered)
ASTM E84 Class 2 or B (Un-adhered)
Notez: Le comportement non-feu dépend de la mousse utilisée.

Solidité à la Lumière

AATCC-16 (40 heures) Class 4

Solidité à la Crocking

AATCC-8 (Sec: 3, Mouillé: 3)

Nettoyage

W
Nettoyer la tâche en n'utilisant que la mousse d'un détergent à base d'eau, comme un détergent doux ou un nettoyant de tissu non-dissolvant.

Ce produit n'est pas adapté aux méthodes d'ameublement utilisant de la colle. L'utilisation de la colle annule toute garantie de ce produit.

Une variation de couleurs peut provenir (commerciallement tolérable). Nous réservons le droit de changer les spécifications techniques sans préavis. Les Droits de Conception non-enregistrés et les droits d'auteur de tous les motifs sont la propriétés exclusives de Camira Fabrics Limited.

ES

Composición

Superficie: 93% Corcho, 7% PU
Sustrato: 55% PU, 29,5% Poliéster, 15,5% Algodón

Ancho

54 pulgadas mínimo

Peso

13^{1/4} oz/sq yd ±10% (20 oz/lin.y ±10%)

Inflamabilidad

ASTM E84 Class 1 or A (Adhered)
ASTM E84 Class 2 or B (Un-adhered)
Nota: El grado de Inflamabilidad depende del tipo de foam utilizado.

Solidez a la Luz

AATCC-16 (40 horas) Class 4

Solidez al Rozamiento

AATCC-8 (Seco: 3, Húmedo: 3)

Limpieza

W
Limpieza de manchas, usando solamente la espuma de un producto de limpieza con agua, como puede ser un detergente suave o un jabón de limpieza de tapicerías sin ningún disolvente.

Este tejido no es adecuado para tapizar usando cola. No damos garantía alguna del tejido si se usa cola.

Se reserva el derecho de modificar las especificaciones técnicas sin previo aviso. Los derechos sobre dibujos no registrados y los derechos de autor sobre todos los dibujos son propiedad exclusiva de Camira Group Inc.